

# >> Confocal Raman Imaging Workshop

May 2<sup>nd</sup>, Washington DC, USA  
George Washington University

This workshop will provide a detailed introduction to the operational principles and instrumental configurations of confocal Raman imaging along with techniques suitable for correlative measurements, such as AFM, SEM and SNOM.

The George Washington University and WITec invite scientists interested in chemically identifying and imaging compounds at the highest spatial and spectral resolution.

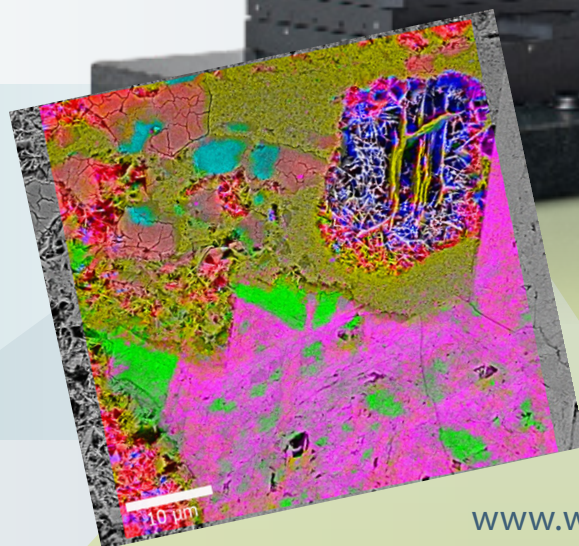
Speakers from prestigious institutes will cover various aspects of Raman imaging in their fields of application. Speakers from WITec will demonstrate the latest advances in instrument and equipment development.

The number of participants is limited, so please register early to reserve your place. Attendance is free of charge.

## Equipment Demonstration

For equipment demonstration scheduling please reach out directly to the event coordinator Aleks Krsmanovic via [alex@witec-instruments.com](mailto:alex@witec-instruments.com).

**Places will be allocated on a first-come first-served basis.**

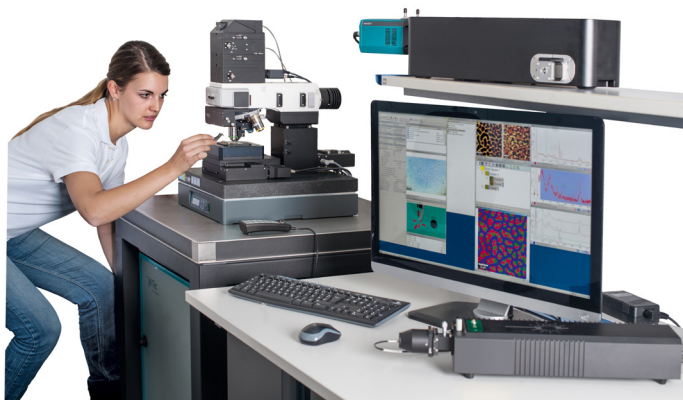




## Workshop Program

Thursday, 02. May 2019

- 08.45 - 09.15 Registration & Coffee
- 09.15 - 10.00 Fernando Vargas, WITec GmbH  
WITec portfolio overview: past, present and future
- 10.00 - 10.45 Blake Simpkins, Naval Research Laboratory  
Strong coupling between molecular vibrations and cavity photons:  
Controlling static and transient response
- 10.45 - 11.30 Andrew Steele, Carnegie Geophysical Laboratory  
Use of confocal Raman microscopy in the search for life on Mars
- 11.30 - 12.30 *Lunch break, provided by WITec*
- 12.30 - 13.15 David McKeown, Catholic University of America  
Raman spectroscopic studies of hydrothermally altered borosilicate  
nuclear waste glasses
- 13.15 - 14.00 Ute Schmidt, WITec GmbH  
RISE: Correlative Raman imaging and scanning electron microscopy
- 14.00 - 14.15 *Coffee break, provided by WITec*
- 14.15 - 15.00 Glen Birdwell, US Army Research Laboratory  
Electronic materials and devices characterization via Raman imaging:  
Case studies in diamond, van der Waals and phase change materials
- 15.00 - 15.45 Marina Leite, University of Maryland  
Imaging functional materials at the nanoscale



## Location



The George Washington University  
Nanofabrication and Imaging Center  
Science and Engineering Hall  
B1270  
800 22<sup>nd</sup> St NW,  
Washington DC 20052  
USA

WITec North America  
WITec Instruments Corp.  
130G Market Place Blvd  
Knoxville . TN 37922 . USA  
Phone 865 984 4445 . Fax 865 984 4441  
info@WITec-Instruments.com  
www.WITec-Instruments.com

## Registration

For registration please visit:

[www.witec.de/resources-and-education/workshops/workshop-gwu](http://www.witec.de/resources-and-education/workshops/workshop-gwu)