

workshop

Lise-Meitner-Strasse 6, D-89081 Ulm, Germany
Tel. +49 (0) 731 140 700, Fax. +49 (0) 731 140 70200
www.witec.de, info@witec.de

WITec
focus innovations

Introduction to Confocal Raman and Scanning Probe Microscopy November 9th., 2009 - Nanyang Technological University, Singapore

The workshop will give a detailed introduction to the operational principles and instrumental configurations relevant to confocal Raman and Scanning Probe Microscopy (AFM, SNOM, Pulsed Force Mode). Our Speakers will cover several aspects of Raman and SPM imaging and its fields of applications. An extensive

hands-on session gives the participants the opportunity to apply this knowledge and to evaluate their individual samples. Scientists interested in how to chemically identify and image the compounds of a sample at the highest spatial resolution are invited to participate. Typical research fields

for confocal Raman imaging are pharmaceuticals and cosmetics, materials and polymer sciences, archaeology and geoscience, forensics, coatings, thin films and all fields where a clear identification of the distribution of chemical compounds is a necessity.

Program

Monday, 9th of November 2009

09.30 - 10.00

10.00 - 10.10

10.10 - 11.10 Matthias Kress

11.10 - 11.25

11.25 - 12.00 Dr. Olaf Hollricher

12.00 - 12.45

12.45 - 13.15 Prof. Ze Xiang Shen

13.15 - 16.00

Registration

Welcome Extrad Instrumentation Pte Ltd. and WITec GmbH

Introduction to Confocal Raman Imaging

Coffee Break

Combining High Resolution Optical and Scanning Probe Microscopy

Lunch Break, incl. Lunch Snack

Applications of near-field Raman Imaging in Plasmonics and Nano Materials

Equipment Demonstration & Discussion

Speakers

Matthias Kress

Mr. Kress is Director Sales Asia at WITec GmbH, Ulm, Germany.

Dr. Olaf Hollricher

Dr. Hollricher is managing director and head of Research & Development at WITec GmbH, Ulm, Germany.

Prof. Ze Xiang Shen

Prof. Shen is Associated Chair of the School of Physical and Mathematical Sciences at the Division of Physics & Applied Physics of Nanyang Technological University in Singapore.

General Information

The workshop is free of charge but it requires registration due to limited availability of places. In order to register, please send your contact information (Name and Titel, Institution, Address, E-Mail, Phone and Fax) electronically to Mr. Shawn Lee, shawn@extrad-asean.com. The number of participants is limited, so book early to save your place. The language of the workshop is English.

Workshop venue:

School of Physical & Mathematical Sciences Nanyang Technological University
SPMS-04-10,
21 Nanyang Link
Singapore 637371
Room No.: SPMS-04-10, level 4, Tutorial Room 10

Local Contact Person:

Mr. Shawn Lee
Extrad Instrumentation Pte Ltd
371 Beach Road #02-31 KeyPoint
199597 Singapore

phone +65 - 6296-6908
fax +65 - 6296-6906
e-mail: shawn@extrad-asean.com

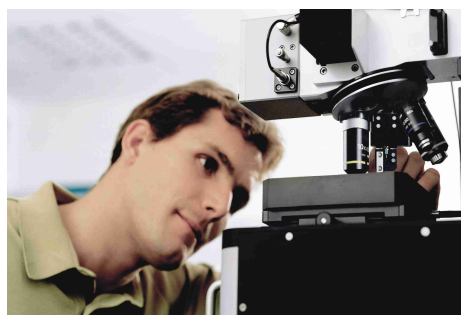


Fig. 1: WITec alpha300 Microscope System

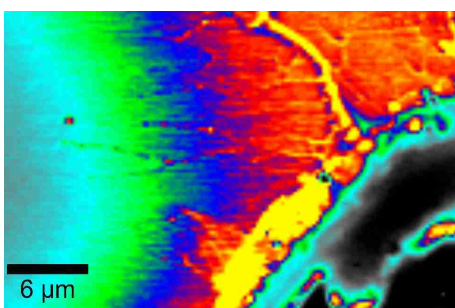


Fig. 2: Splash of Si on a Si-Solar cell device (integral intensity of the 1st order Si peak).

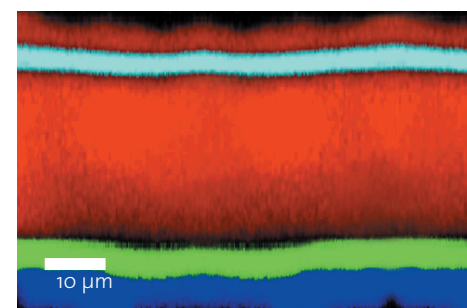


Fig. 3: Raman Image of a Multi-layer polymer coating.